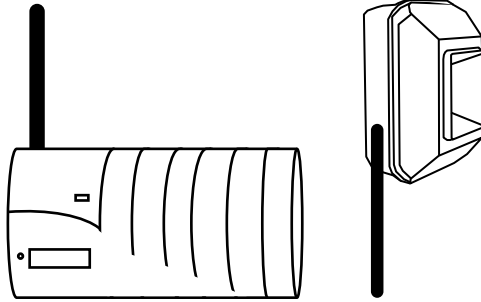


TX2000A and RX2000A

Wireless Driveway Alert System

Parts Included

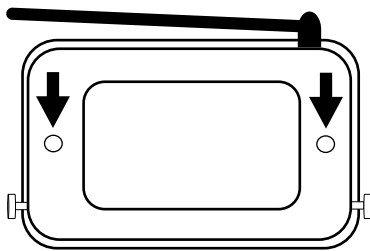
- TX2000A Outdoor Transmitter
- RX2000A Indoor Receiver
- Aluminum Transmitter Bracket
- Mounting Screws X4



Required Items

- AA Batteries X2
- P1 Philips Screwdriver

Getting Started



(When turning the unit over, be careful not to lose the two screws as they might fall out.)

The **TX2000A** requires 2 AA batteries.

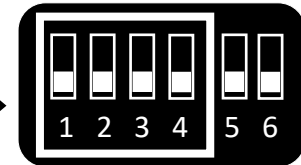
To access the battery pack you need to remove the two recessed screws on the back of the unit. (Shown by the arrows.) Turn the unit over and remove the lid.

The **RX2000A** comes equipped with a 12VDC plug-in power supply with a 5ft cord.

DIP Switches

IMPORTANT: There is no need to change these DIP switches unless you are experiencing false rings from neighboring devices.

(If DIP Switches are changed, Switches **1 - 4** must be the **SAME** on **BOTH** TX & RX units!)

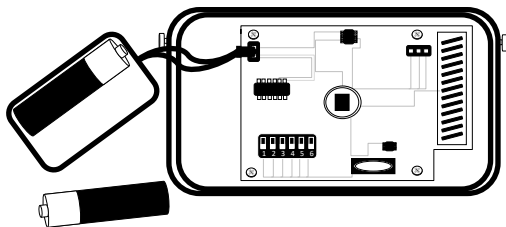


"To register any DIP switch change, you will need to disconnect power from the unit you are making the changes on"

Selecting the Tones

Tones are set on the TX only!

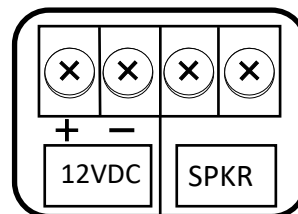
1. 5 and 6 down = Ding Dong (Default)
2. 5 Up and 6 down = Single Ding
3. 5 down and 6 Up = Double Ding Dong
4. 5 and 6 Up = Turbo Sound



"To register any DIP switch change, you will need to disconnect power from the unit you are making the changes on."

The RX Unit

DIP switches **5 & 6** on the **RX** unit control the length of time the 12VDC terminal receives power when using an external wired accessory such as a **siren, buzzer or strobe**.



The **SPKR** terminal is used to attach external speakers **only**.

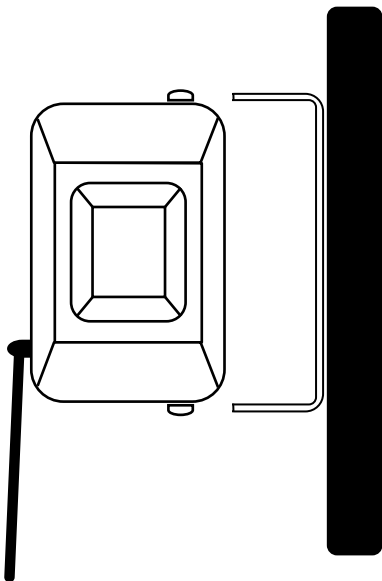
If no 12VDC accessory is attached, DIP switches 5 & 6 create a **delay in between tones**.

- **5 Up** 5 sec. delay / 5 sec. of power
- **6 Up** 20 sec. delay / 20 sec. of power

TX2000A and RX2000A Installation Instructions

TX2000A

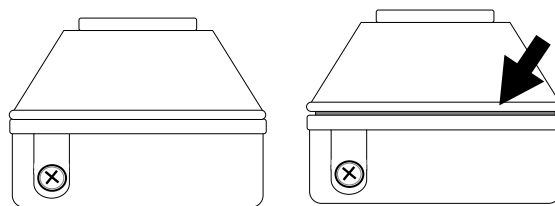
For optimal performance the TX2000A needs to be mounted **2-3** feet off the ground in the **vertical** position with the antenna pointing down and away



Environmental conditions such as, parked vehicles, trees, fences, metal objects and other structures must be considered during installation and may have effect on range.

O-Ring

Tighten the recessed screws on the back of the unit **evenly** and **securely** to ensure the **O-ring** is completely **compressed** and can no longer be seen from **this angle**.



Doing this will ensure a weather resistant seal.

To limit false rings from motion beyond your driveway, terminate the beam by aiming at a rock, tree or fencepost.

